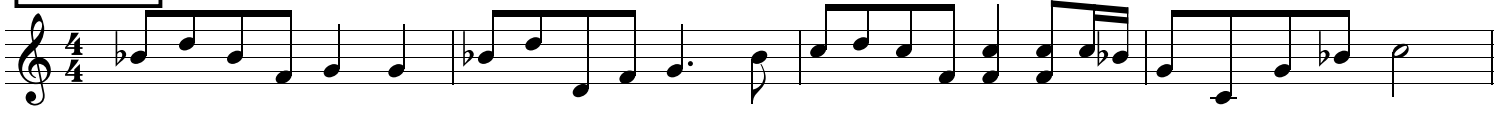


# One River Two Streams

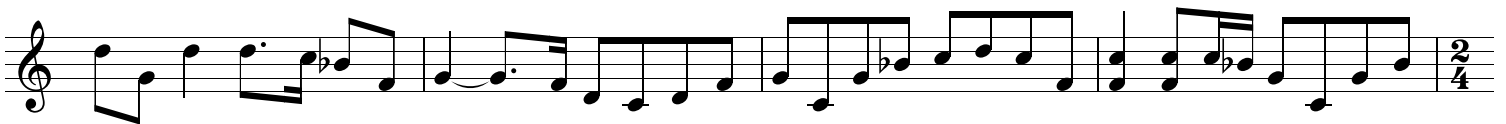
Sam Hué Tinh

♩ = 83

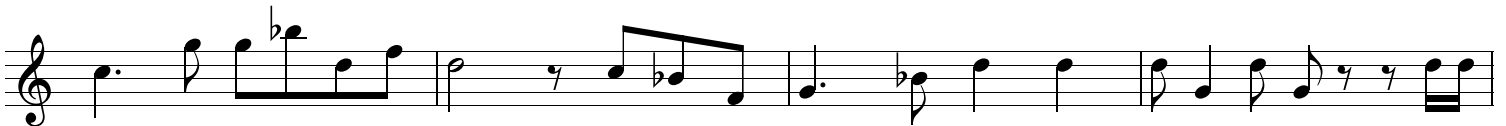
**intro 1**



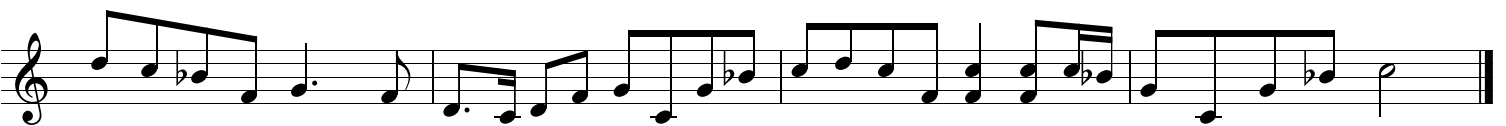
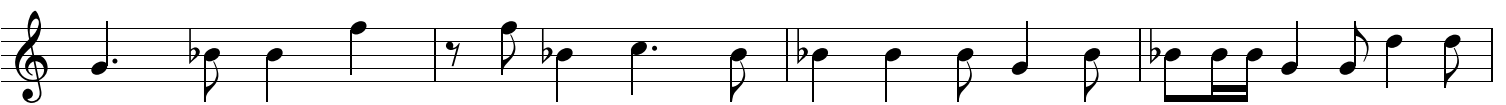
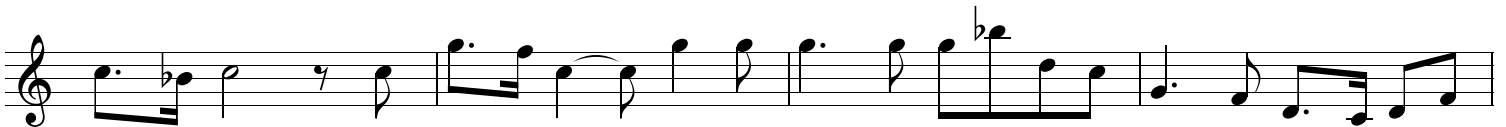
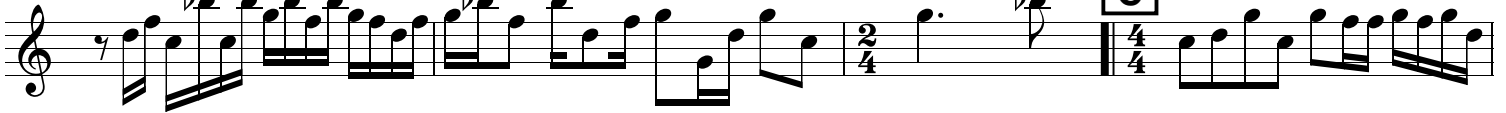
**A**



**B**



**C**



# One River Two Streams

Guitar

Nguyễn Lê

The sheet music is written for guitar in a single system with 12 staves. It begins with a treble clef and a key signature of one flat (B-flat). The first staff contains a repeat sign and the instruction "solo open G-". The second staff features a melodic line with a B-flat note and a boxed "D" chord. The third staff continues the melody with a B-flat note. The fourth staff shows a melodic line with a B-flat note. The fifth staff contains a "Break" section with a 2/4 time signature and a 4/4 time signature. The sixth staff continues the melody with a B-flat note. The seventh staff features a melodic line with a B-flat note and a boxed "E" chord. The eighth staff continues the melody with a B-flat note. The ninth staff features a melodic line with a B-flat note and a boxed "F" chord. The tenth staff continues the melody with a B-flat note. The eleventh staff contains a melodic line with a B-flat note and a boxed "break" section. The twelfth staff concludes the piece with a final note and a repeat sign.